

CONSERVATION, DRAINAGE, SANITARY SEWER, WATER AND TRAIL EASEMENTS SHOWN HEREON ARE RECORDED IN WESTCHESTER COUNTY DIVISION OF LAND RECORDS

VILLAGE OF CROTON-ON-HUDSON
TAX MAP DESIGNATION
SECTION 67.11 BLOCK 1 LOT 3
SECTION 67.15 BLOCK 1 LOT 2
FORMERLY:
SECTION 59 BLOCK 401 LOTS 3A & 4
ZONE R40-A
CONSERVATION OPEN SPACE
TOTAL AREA = 18.536 ACRES

APPROVED FOR FILING, OWNER OF RECORD
ARROW CREST, INC.

BY *[Signature]*
PRESIDENT

DATE *12.28.95*

ALL STREETS TO BE DEDICATED TO THE VILLAGE OF CROTON-ON-HUDSON

ACCURACY OR COMPLETENESS OF SUBSURFACE INFORMATION IF ANY IS NOT CERTIFIED.

UNAUTHORIZED ALTERATION OR ADDITION TO THIS MAP IS A VIOLATION OF SEC. 7209 OF THE N.Y.S. EDUCATION LAW.

FILED IN WESTCHESTER COUNTY
DIVISION OF LAND RECORDS
ON JANUARY 16, 1996 AS
MAP NO. 25587

REVISED SUBDIVISION MAP ARROW CREST

REVISING AND AMENDING
FILED MAP NO. 25255
SHEET 1 OF 3 SHEETS

VILLAGE OF CROTON - ON - HUDSON
TOWN OF CORTLANDT
WESTCHESTER COUNTY, NEW YORK

WESTCHESTER COUNTY MAP INDEX - SHEET 185, BLOCK 9847

WESTCHESTER COUNTY DEPARTMENT OF HEALTH
WHITE PLAINS, N.Y.

APPROVED SUBJECT TO PROVISION OF PUBLIC WATER SUPPLY FACILITIES AND PUBLIC SEWAGE DISPOSAL FACILITIES TO SERVE EACH HABITABLE BUILDING HEREAFTER CONSTRUCTED TO BE INSTALLED IN ACCORDANCE WITH IMPROVEMENT PLANS ON FILE WITH THIS DEPARTMENT AND PLANS AND SPECIFICATIONS DULY APPROVED AND FILED IN THIS OFFICE PRIOR TO THE CONSTRUCTION OF SUCH BUILDING.
EACH PURCHASER OF PROPERTY SHOWN HEREON SHALL BE FURNISHED A TRUE COPY OF MAP SHOWING THIS ENDORSEMENT.

ANY ERASURES, CHANGES, ADDITIONS OR ALTERATIONS OF ANY KIND EXCEPT THE ADDITION OF SIGNATURES OF OTHER APPROVING AUTHORITY AND THE DATE THEREOF MADE ON THIS PLAN AFTER THE DATE OF THIS APPROVAL, SHALL INVALIDATE THIS APPROVAL.

RECOMMENDED BY
[Signature] P.E.
DATE *12.28.95*
[Signature]
COMMISSIONER OF HEALTH

APPROVED BY RESOLUTION OF THE PLANNING BOARD OF THE VILLAGE OF CROTON-ON-HUDSON ON THIS *12* DAY OF *January*, 1995, SUBJECT TO ALL REQUIREMENTS AND CONDITIONS OF SAID RESOLUTION SIGNED THIS *10* DAY OF *January*, 1995.

[Signature] CHAIRMAN
[Signature] SECRETARY

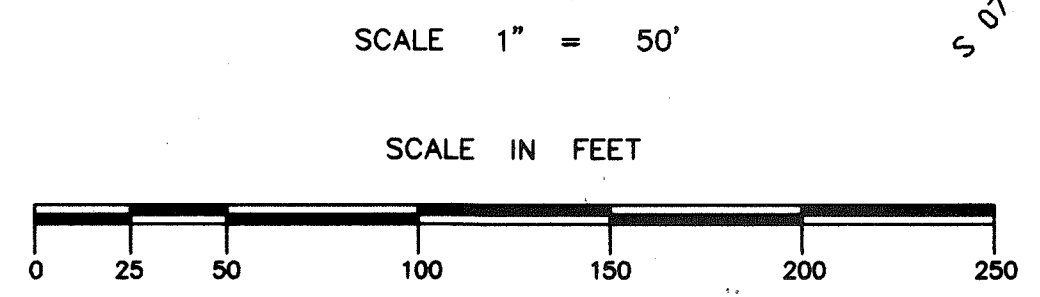
THE CONDITIONS CONTAINED IN THE VILLAGE OF CROTON-ON-HUDSON PLANNING BOARD'S RESOLUTION OF FINAL SUBDIVISION PLAN APPROVAL ADOPTED ON *3.15.94* RELATING TO THE DESIGN AND CONSTRUCTION OF ALL IMPROVEMENTS ON THIS PROPERTY SHALL BE BINDING ON ALL SUCCESSORS AND ASSIGNS OF ALL PROPERTY SHOWN ON THIS PLAT.

I, CHARLES RILEY, A LICENSED LAND SURVEYOR IN THE STATE OF NEW YORK DO HEREBY CERTIFY THAT THIS PLAN CORRECTLY REPRESENTS THE LOTS, LAND AND STREETS AS SURVEYED AND PLOTTED BY ME FOR THE OWNER.
DATE *DECEMBER 18, 1995*
[Signature]
CHARLES RILEY, N.Y.S.L.C.S.

I, CHARLES RILEY THE SURVEYOR WHO MADE THIS MAP DO HEREBY CERTIFY THAT THE SURVEY OF THE PROPERTY SHOWN HEREON WAS COMPLETED ON NOVEMBER 25, 1987 AND THIS MAP WAS COMPLETED ON DECEMBER 6, 1995, REVISED DECEMBER 18, 1995.

CHARLES RILEY
LAND SURVEYOR
LAND PLANNER
69 MAIN STREET
TARRYTOWN, N.Y.
© 1995

UTILITIES DESIGNED BY
[Signature]
MICHAEL R. STERLACCI, N.Y.S.L.C.P.E. NO. 49424



VILLAGE OF CROTON-ON-HUDSON
TAX MAP DESIGNATION
SECTION 67.11 BLOCK 1 LOT 3
SECTION 67.15 BLOCK 1 LOT 2
FORMERLY:
SECTION 59 BLOCK 401 LOTS 3A & 4
ZONE R40-A

CONSERVATION / OPEN SPACE
TOTAL AREA = 18.721 ACRES

ALL STREETS TO BE DEDICATED TO
THE VILLAGE OF CROTON-ON-HUDSON

I, CHARLES RILEY, A LICENSED LAND SURVEYOR IN THE STATE
OF NEW YORK DO HEREBY CERTIFY THAT THIS PLAN CORRECTLY
REPRESENTS THE LOTS, LAND AND STREETS AS SURVEYED AND
PLOTTED BY ME FOR THE OWNER.

DECEMBER 18, 1995.
DATE CHARLES RILEY, N.Y.S.L.C.P.E.

I, CHARLES RILEY THE SURVEYOR WHO MADE THIS
MAP DO HEREBY CERTIFY THAT THE SURVEY OF
THE PROPERTY SHOWN HEREON WAS COMPLETED
ON NOVEMBER 25, 1987 AND THIS MAP WAS
COMPLETED ON JUNE 16, 1994, REVISED
AUGUST 17, 1994, REVISED DECEMBER 18, 1995.

ACCURACY OR COMPLETENESS OF
SUBSURFACE INFORMATION IF ANY
IS NOT CERTIFIED.

UNAUTHORIZED ALTERATION OR
ADDITION TO THIS MAP IS A
VIOLATION OF SEC. 7209 OF
THE N.Y.S. EDUCATION LAW.

CONSERVATION, DRAINAGE, SANITARY SEWER, WATER
AND TRAIL EASEMENTS SHOWN HEREON ARE RECORDED
IN WESTCHESTER COUNTY DIVISION OF LAND RECORDS

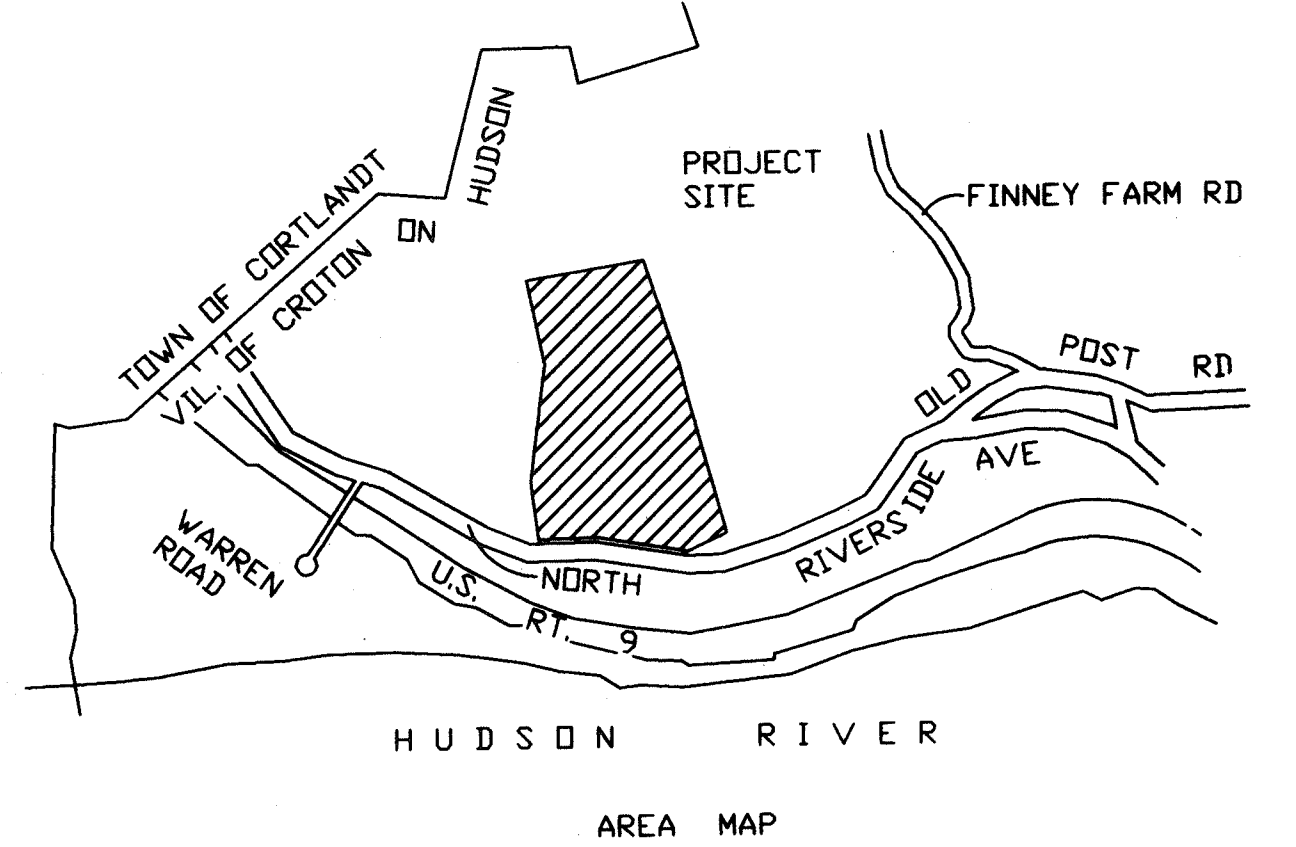
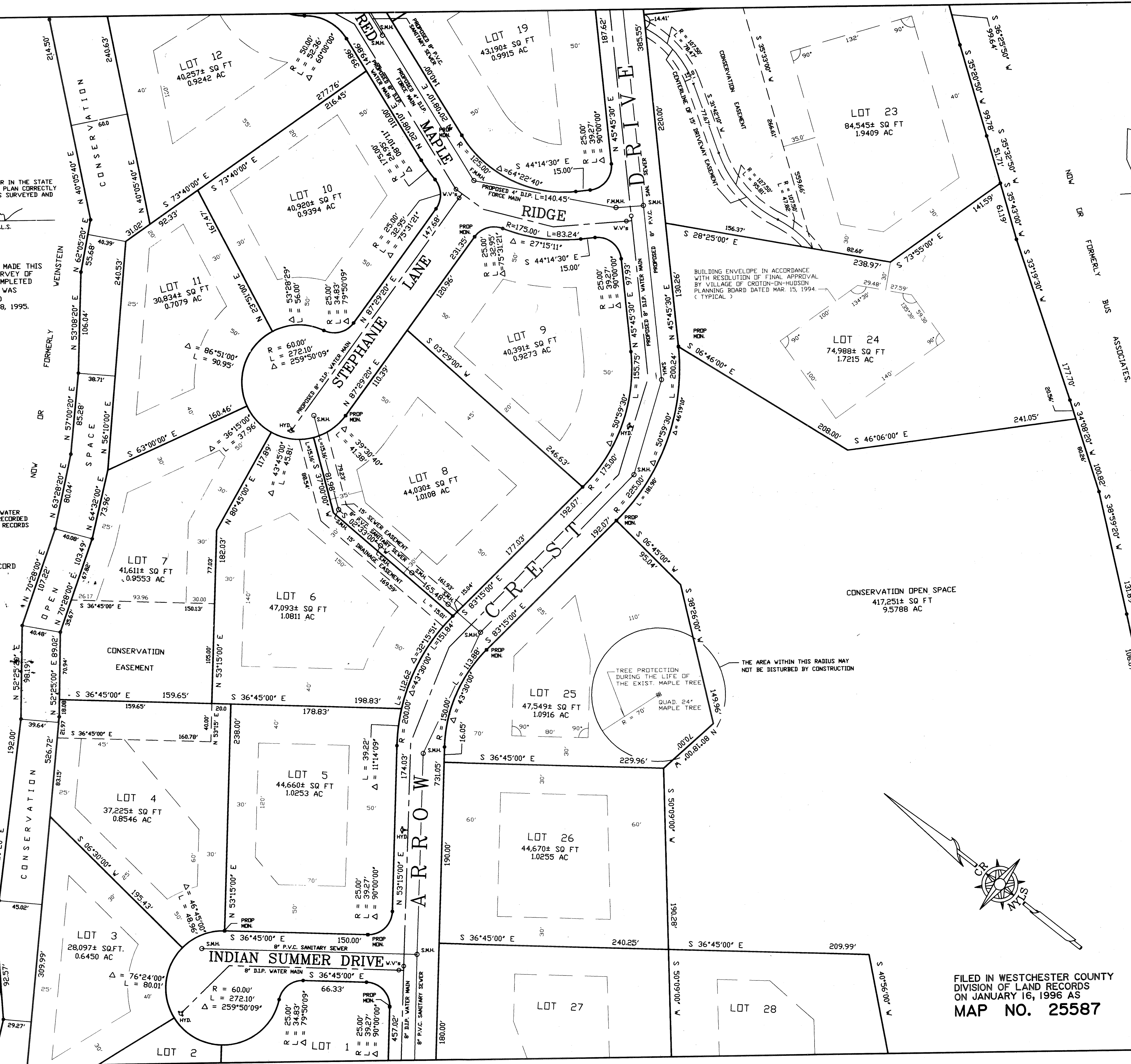
APPROVED FOR FILING, OWNER OF RECORD
ARROW CREST, INC.

BY *[Signature]*
PRESIDENT
DATE



UTILITIES DESIGNED BY
[Signature]
MICHAEL R. STERLACCI
N.Y.S.L.C.P.E. NO. 49424

[Signature]
CHARLES RILEY
LAND SURVEYOR
LAND PLANNER
69 MAIN STREET
TARRYTOWN, N.Y.



WESTCHESTER COUNTY DEPARTMENT OF HEALTH
WHITE PLAINS, N.Y.

APPROVED SUBJECT TO PROVISION OF PUBLIC WATER SUPPLY
FACILITIES AND PUBLIC SEWAGE DISPOSAL FACILITIES TO
SERVE EACH HABITABLE BUILDING HEREAFTER CONSTRUCTED
TO BE INSTALLED IN ACCORDANCE WITH IMPROVEMENT PLANS
ON FILE WITH THIS DEPARTMENT AND PLANS AND SPECIFICA-
TIONS DULY APPROVED AND FILED IN THIS OFFICE PRIOR TO
THE CONSTRUCTION OF SUCH BUILDING.
EACH PURCHASER OF PROPERTY SHOWN HEREON SHALL BE
FURNISHED A TRUE COPY OF MAP SHOWING THIS ENDORSEMENT.

ANY ERASURES, CHANGES, ADDITIONS OR ALTERATIONS OF ANY
KIND EXCEPT THE ADDITION OF SIGNATURES OF OTHER
APPROVING AUTHORITY AND THE DATE THEREOF MADE ON THIS
PLAN AFTER THE DATE OF THIS APPROVAL, SHALL INVALIDATE
THIS APPROVAL.

RECOMMENDED BY

[Signature] 12/28/95 P.E.

DATE 12/28/95
COMMISSIONER OF HEALTH

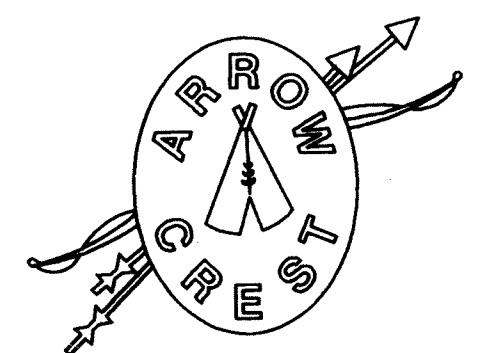
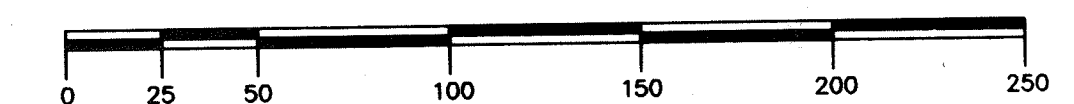
APPROVED BY RESOLUTION OF THE PLANNING BOARD
OF THE VILLAGE OF CROTON - ON - HUDSON ON
THIS 15th DAY OF MARCH 1994, SUBJECT TO
ALL REQUIREMENTS AND CONDITIONS OF SAID
RESOLUTION SIGNED THIS 16th DAY OF January 1994.

[Signature] CHAIRMAN
[Signature] SECRETARY

THE CONDITIONS CONTAINED IN THE VILLAGE OF CROTON-ON-HUDSON
PLANNING BOARD'S RESOLUTION OF FINAL SUBDIVISION PLAT APPROVAL
ADOPTED ON MARCH 15, 1994 RELATING TO THE DESIGN AND CONSTRUCT-
ION OF ALL IMPROVEMENTS ON THIS PROPERTY SHALL BE BINDING ON
ALL SUCCESSORS AND ASSIGNS OF ALL PROPERTY SHOWN ON THIS PLAT.

SCALE 1" = 50'

SCALE IN FEET



REVISED
SUBDIVISION MAP
ARROW CREST

REVISING AND AMENDING
FILED MAP NO. 25255
SHEET 2 OF 3 SHEETS

VILLAGE OF CROTON - ON - HUDSON
TOWN OF CORTLANDT
WESTCHESTER COUNTY, NEW YORK

WESTCHESTER COUNTY MAP INDEX - SHEET 185, BLOCK 9847

FILED IN WESTCHESTER COUNTY
DIVISION OF LAND RECORDS
ON JANUARY 16, 1996 AS
MAP NO. 25587

VILLAGE OF CROTON-ON-HUDSON
TAX MAP DESIGNATION
SECTION 67.11 BLOCK 1 LOT 3
SECTION 67.15 BLOCK 1 LOT 2

FORMERLY:
SECTION 59 BLOCK 401 LOTS 3A & 4

ZONE R40-A

THE CONDITIONS CONTAINED IN THE VILLAGE OF CROTON-ON-HUDSON
PLANNING BOARD'S RESOLUTION OF FINAL SUBDIVISION PLAT APPROVAL
DATED MARCH 15, 1994 AND AS AMENDED ON DECEMBER 6, 1995
RELATING TO THE DESIGN AND CONSTRUCTION OF ALL IMPROVEMENTS
ON THIS PROPERTY SHALL BE SHOWN ON ALL SUCCESSORS AND
ASSIGNS OF ALL PROPERTY SHOWN ON THIS PLAT.

CONSERVATION, DRAINAGE, SANITARY SEWER, WATER
AND TRAIL EASEMENTS SHOWN HEREON ARE RECORDED
IN WESTCHESTER COUNTY DIVISION OF LAND RECORDS

THIS AMENDED SUBDIVISION MAP SHALL BE SUBJECT TO
ALL PROVISIONS SET FORTH ON FILED MAP NO. 25255.

ACCURACY OR COMPLETENESS OF
SUBSURFACE INFORMATION IF ANY
IS NOT CERTIFIED.

UNAUTHORIZED ALTERATION OR
ADDITION TO THIS MAP IS A
VIOLATION OF SEC. 7209 OF
THE N.Y.S. EDUCATION LAW.

ALL STREETS TO BE DEDICATED TO
THE VILLAGE OF CROTON-ON-HUDSON.

WATER AND SEWER SHOWN HEREON
HAVE BEEN INSTALLED.

UTILITIES FOR LOTS OTHER THAN 20 & 21
DESIGNED BY:

Michael R. Sterlacci
MICHAEL R. STERLACCI, N.Y.S.L.C.P.E. NO. 49424

UTILITIES FOR LOTS 20 & 21 DESIGNED BY:

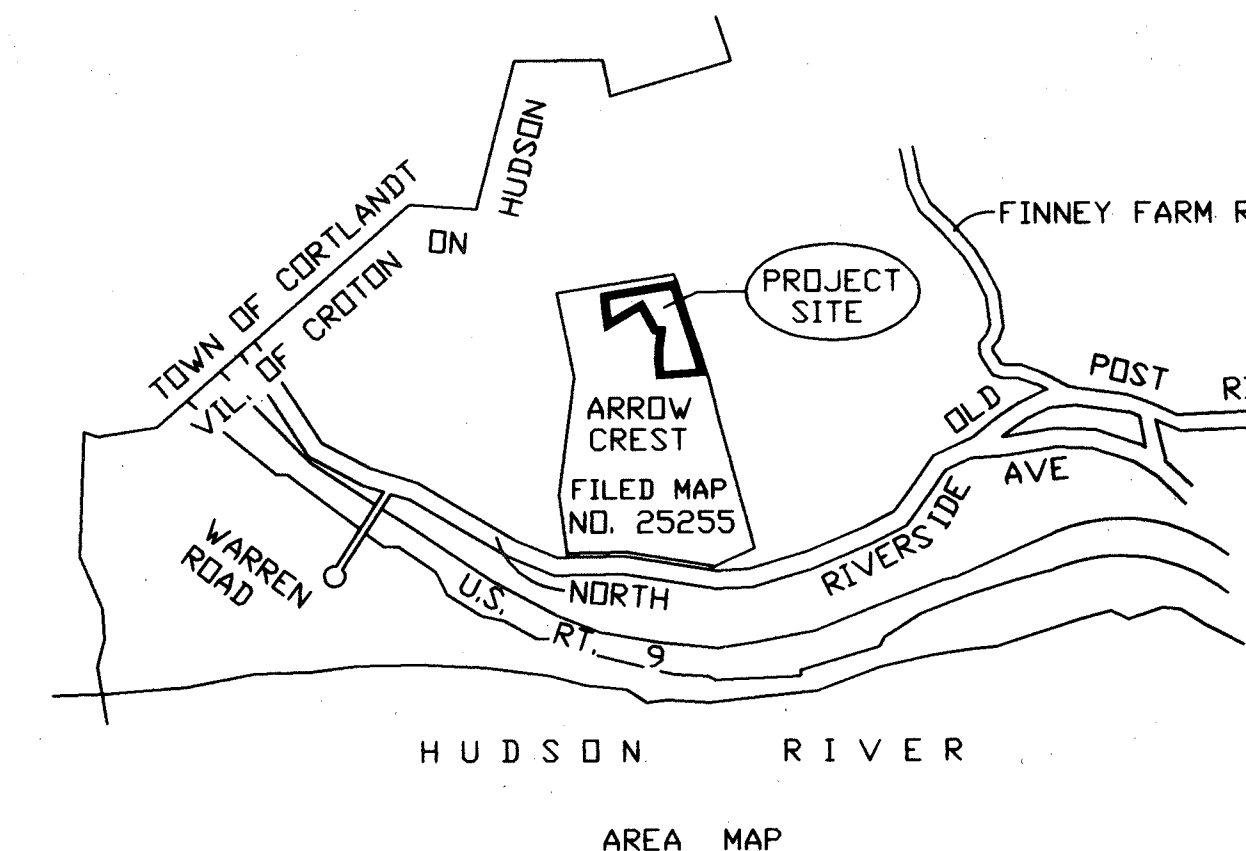
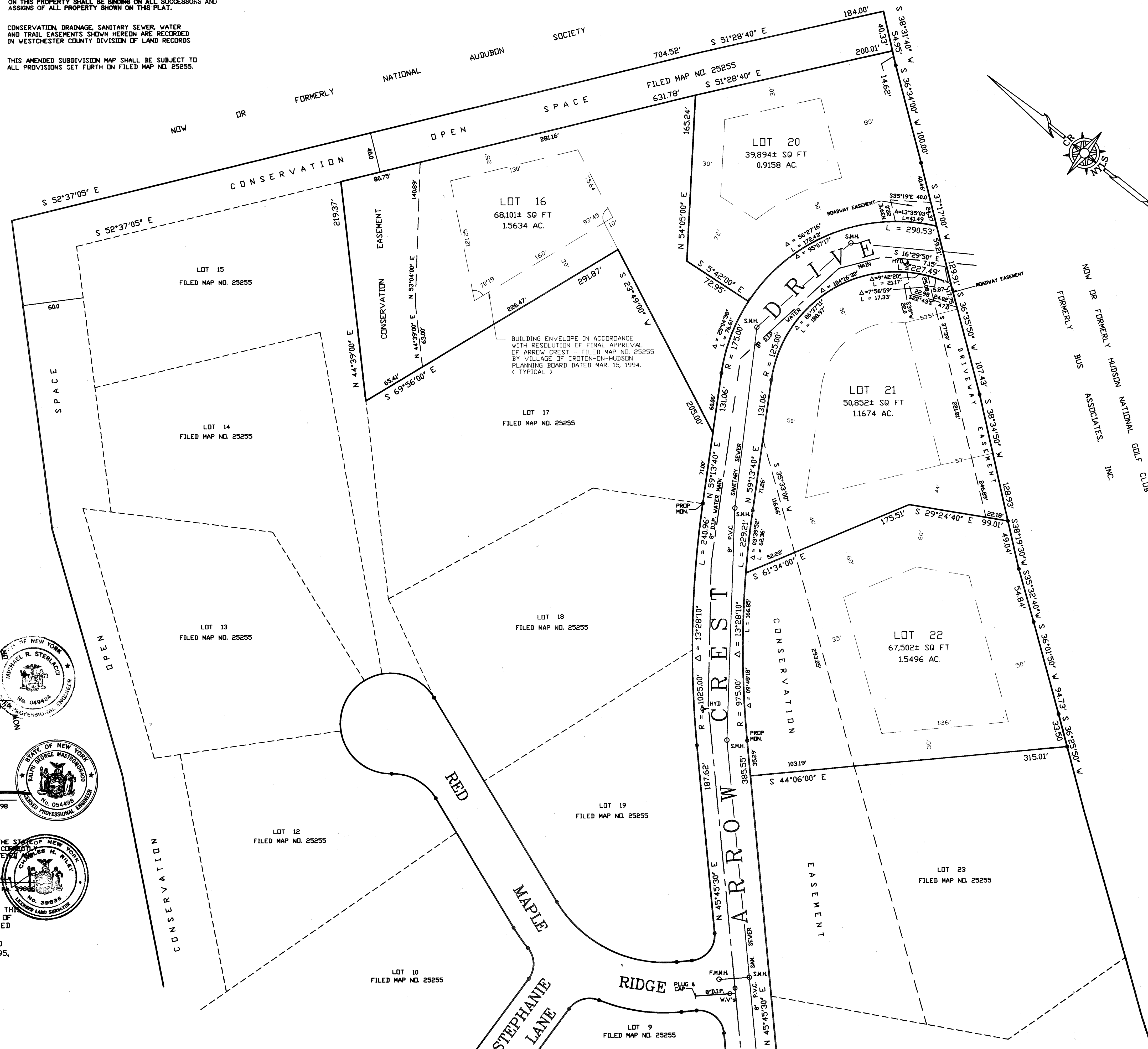
Ralph George Mastrodonaco
RALPH GEORGE MASTRODONACO, N.Y.S.L.C.P.E. NO. 54498

I, CHARLES RILEY, A LICENSED LAND SURVEYOR IN THE STATE OF NEW YORK
DO HEREBY CERTIFY THAT THIS PLAN CORRECTLY REPRESENTS THE LOTS, LAND AND STREETS AS SURVEYED AND
PLOTTED BY ME FOR THE OWNER.

DATE DECEMBER 18, 1995
CHARLES RILEY, N.Y.S.L.C.L.S. NO. 39856

I, CHARLES RILEY THE SURVEYOR WHO MADE THIS
MAP DO HEREBY CERTIFY THAT THE SURVEY OF
THE PROPERTY SHOWN HEREON WAS COMPLETED
ON NOVEMBER 25, 1987 AND THIS MAP WAS
COMPLETED ON SEPTEMBER 14, 1995, REVISED
OCTOBER 5, 1995, REVISED DECEMBER 18, 1995,
REVISED DECEMBER 26, 1995.

CHARLES RILEY
LAND SURVEYOR
LAND PLANNER
69 MAIN STREET
TARRYTOWN, N.Y.



WESTCHESTER COUNTY DEPARTMENT OF HEALTH
WHITE PLAINS, N.Y.

APPROVED SUBJECT TO PROVISION OF PUBLIC WATER SUPPLY
FACILITIES AND PUBLIC SEWAGE DISPOSAL FACILITIES TO
SERVE EACH HABITABLE BUILDING HEREFTER CONSTRUCTED
TO BE INSTALLED IN ACCORDANCE WITH IMPROVEMENT PLANS
ON FILE WITH THIS DEPARTMENT AND PLANS AND SPECIFICA-
TIONS DULY APPROVED AND FILED IN THIS OFFICE PRIOR TO
THE CONSTRUCTION OF SUCH BUILDING.
EACH PURCHASER OF PROPERTY SHOWN HEREON SHALL BE
FURNISHED A TRUE COPY OF MAP SHOWING THIS ENDORSEMENT.

ANY ERASURES, CHANGES, ADDITIONS OR ALTERATIONS OF ANY
KIND EXCEPT THE ADDITION OF SIGNATURES OF OTHER
APPROVING AUTHORITY AND THE DATE THEREOF MADE ON THIS
PLAN AFTER THE DATE OF THIS APPROVAL, SHALL INVALIDATE
THIS APPROVAL.

RECOMMENDED BY

Michael H. Hall P.E.

DATE 12-28-95
COMMISSIONER OF HEALTH

APPROVED BY RESOLUTION OF THE PLANNING BOARD
OF THE VILLAGE OF CROTON - ON - HUDSON ON
THIS 2ND DAY OF DECEMBER, 1995, SUBJECT TO
ALL REQUIREMENTS AND CONDITIONS OF SAID
RESOLUTION SIGNED THIS 2ND DAY OF January 1996

Michael H. Hall CHAIRMAN
Michael H. Hall SECRETARY

APPROVED FOR FILING, OWNER OF RECORD
ARROW CREST, INC.

BY *Michael H. Hall*
PRESIDENT
DATE 12-28-95

SCALE 1" = 50'

0 25 50 100 150 200 250
SCALE IN FEET

FILED IN WESTCHESTER COUNTY
DIVISION OF LAND RECORDS
ON JANUARY 16, 1996 AS
MAP NO. 25587

REVISED
SUBDIVISION MAP
ARROW CREST

REVISING AND AMENDING
FILED MAP NO. 25255
SHEET 3 OF 3 SHEETS

VILLAGE OF CROTON - ON - HUDSON
TOWN OF CORTLANDT
WESTCHESTER COUNTY, NEW YORK

WESTCHESTER COUNTY MAP INDEX - SHEET 185, BLOCK 9847