



Westchester Power Program

2022 Path Forward

March 21, 2022



The Village of
CROTON-on-HUDSON
NEW YORK



**SUSTAINABLE
WESTCHESTER**

SUSTAINABLE WESTCHESTER

COMMUNITY ENERGY

WESTCHESTER POWER



ELECTRIFICATION SOLUTIONS

ENERGYSMART HOMES



GRID EFFICIENCY



GRID REWARDS™

ZERO WASTE



RECYCLE RIGHT APP

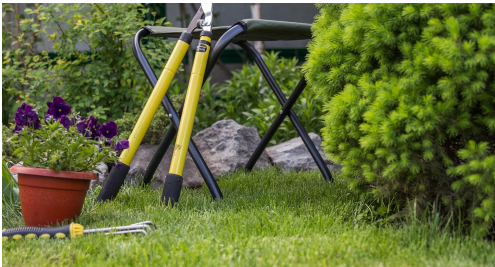


COMMUNITY SOLAR



CLEAN TRANSPORTATION PROJECT

SUSTAINABLE LANDSCAPING

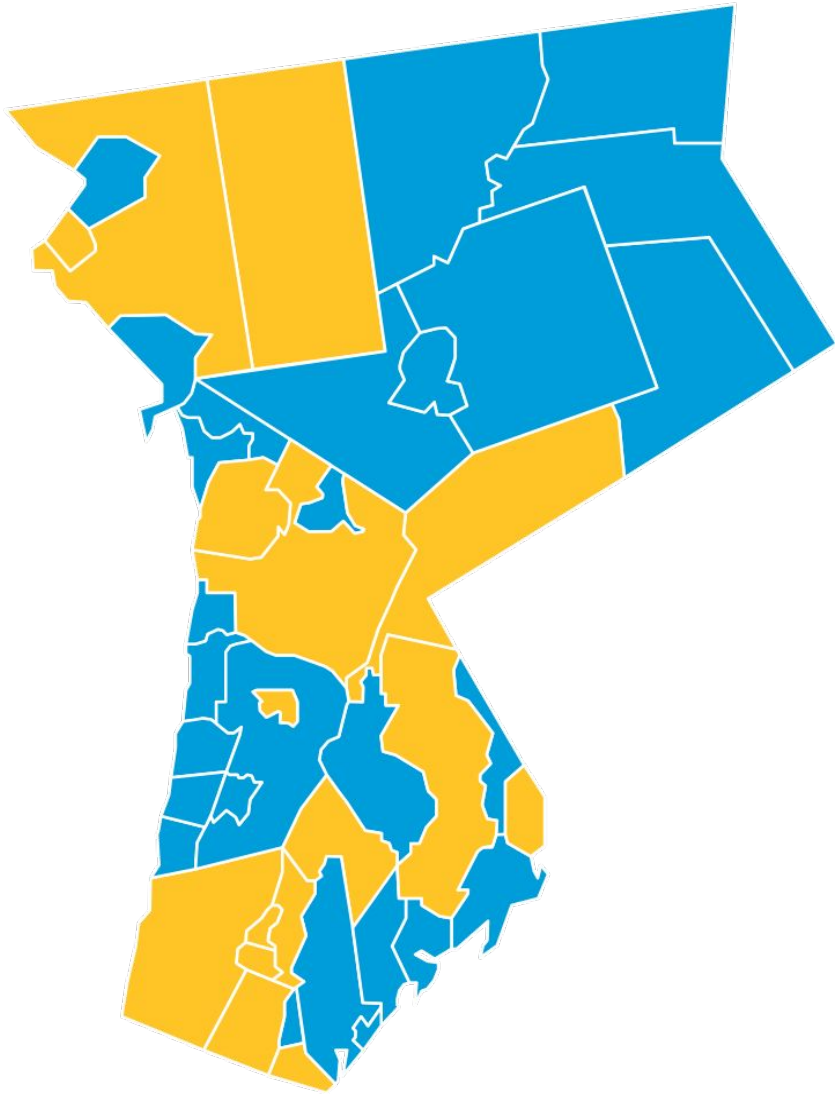


LAND CARE AND ELECTRIC CONVERSION

Shared services for a cleaner, greener Westchester

GETTING READY FOR OPT-OUT COMMUNITY SOLAR CREDITS

- Sustainable Westchester is preparing to launch an exciting, new Solar Credit offering within the Westchester Power program that will provide guaranteed savings to participating households and small businesses.
- The offering prioritizes the delivery of the Solar Credit savings to low- to moderate-income households. We will start with those enrolled in the existing utility's low-income assistance program, i.e. Assistance Program Participants.
- Your first step is to amend your local CCA enabling law to add the Solar Credit to accompany the Supply offering. We have prepared a template of the enabling law for you. Look out for our email!
- For more information, please contact Leo Wiegman, Director of Solar Programs, at leo@sustainablewestchester.org.



WESTCHESTER POWER CCA

MUNICIPAL PARTICIPATION

Ardsley
Bedford
Croton-on-Hudson
Dobbs Ferry
Greenburgh
Hastings-on-Hudson
Irvington

Larchmont
Lewisboro
Mamaroneck Village
Mamaroneck Town
Mount Kisco
New Castle
New Rochelle

North Salem
Ossining Village
Ossining Town
Peekskill
Pelham Village
Pleasantville
Pound Ridge

Rye Brook
Rye City
Sleepy Hollow
Somers
Tarrytown
White Plains
Yonkers

29

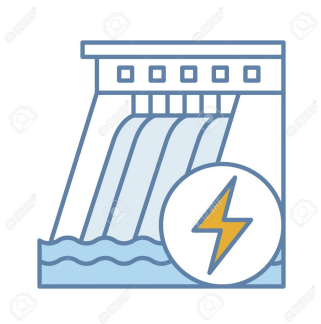
Municipalities

147,000

Residents and
Small Businesses

ELECTRIC INDUSTRY NEED-TO-KNOW

ELECTRICITY GENERATION (SUPPLY) AND DELIVERY



SOURCE (SUPPLY)



**WESTCHESTER
POWER**
contracts and administers
electricity supply



DELIVERY



CON EDISON
delivers energy, maintains lines,
bills customers



CUSTOMER



YOU
have energy choice, support
clean energy

OPT-OUT FORMAT – COMMUNITY DEFAULT

- There is always a default supply (Con Edison is an opt-out format also)
- Communities that participate in the Westchester Power program have the decision about that default supply brought into the community
 - Program is approved as an alternative to confusing ESCO offerings
 - Cost-effective means of bringing more renewable energy to the community
- Opt-out structure ensures that we are able to fully leverage the buying clout of all participating municipalities

WESTCHESTER IS MAKING A HUGE IMPACT!



=



or



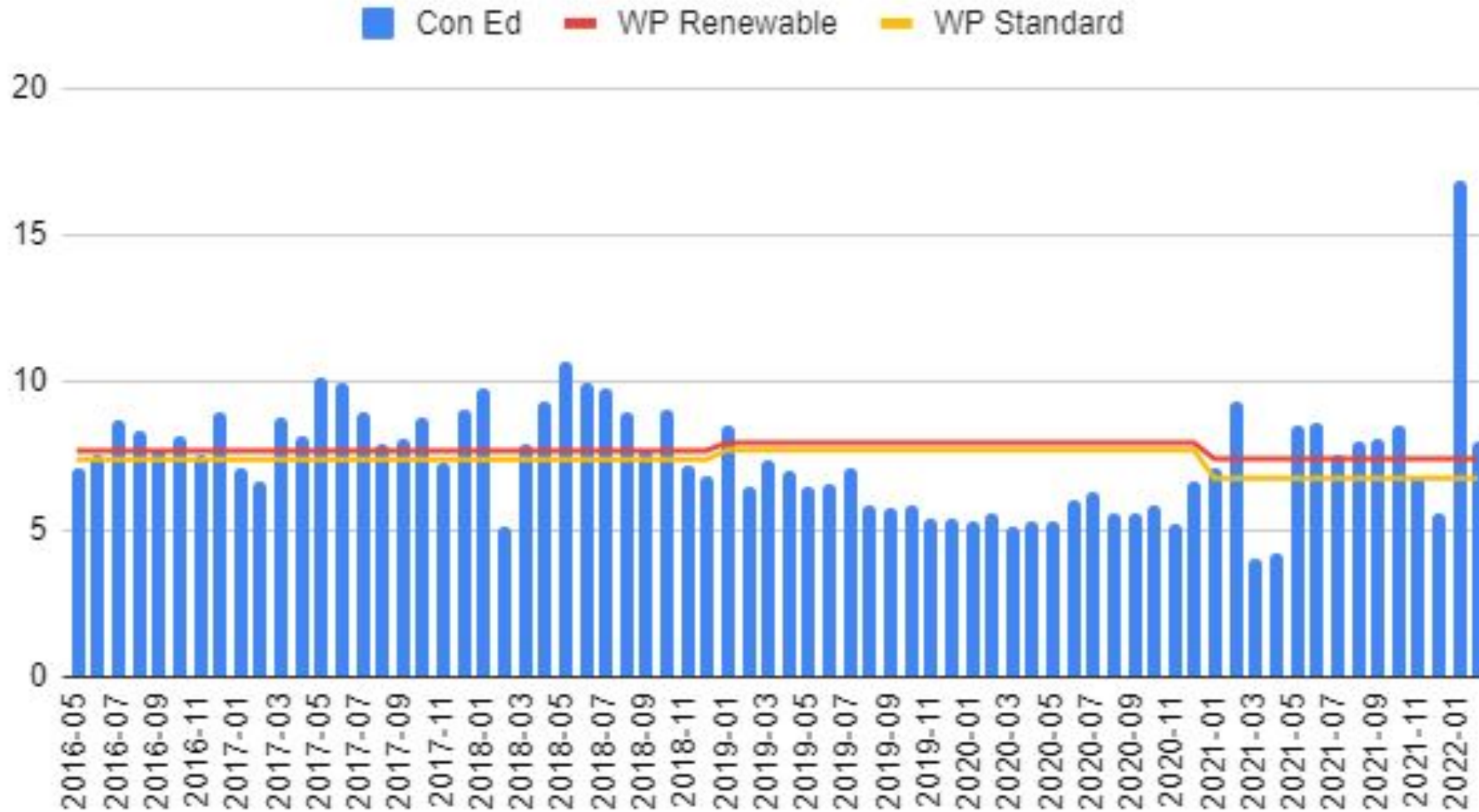
	METRIC TONS OF CO ₂ MITIGATED	CARS TAKEN OFF THE ROAD FOR 1 YEAR	TREE SEEDLINGS FOR 10 YEARS
County-wide	1,100,000	293,000	18.2 million
Croton	13,300	2,913	221,482

RATES / SUPPLY OPTIONS / TERMS

- Current Westchester Power rates residents in Con Ed territory are fixed through June 30, 2022:
 - **100% Renewable Supply = 7.41 cents/kWh**
 - **Standard Supply = 6.75 cents/kWh**
- Since Con Ed rates are variable month to month and we cannot know what they will be in the future, the program cannot guarantee savings
- Remember though Con Ed is “mixed supply” that includes fossil fuels, not 100% renewable energy so comparing the two is a little “apples to oranges”
- Consumer-friendly: opt-out, opt-back in, or switch supplies at any time – fixed rate serves as a cap

RATES TO-DATE

Con Ed - Residential



Current Contract Rate Performance

1/1/2021 thru 2/28/2022

Estimated Avg. Charges by Supply

Customer Type	Avg. Monthly Account Use	Con Edison	WP 100% Renewable	WP Standard
Residential	615 kWh	\$684	\$634	\$577
Small Commercial	719 kWh	\$771	\$714	\$649

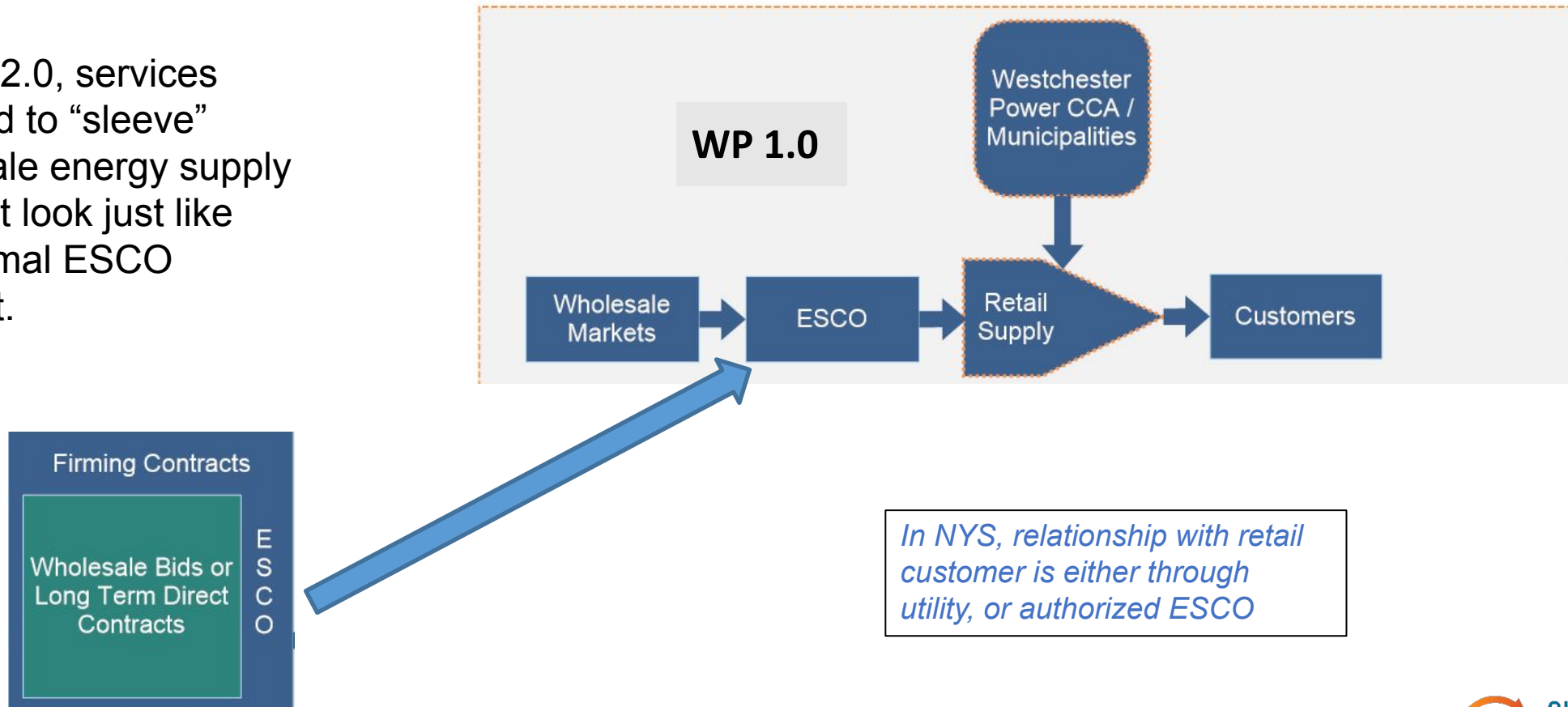
2022 – WESTCHESTER POWER 2.0, EVOLUTIONARY IMPERATIVES

Expanding Westchester Power capacity for environmental and economic impact

- Increasing the supplier pool for enhanced competition
- Building capacity to support longer term contracts and more flexible supply formats
- Which in turn can lead to long term price stability and more renewable construction

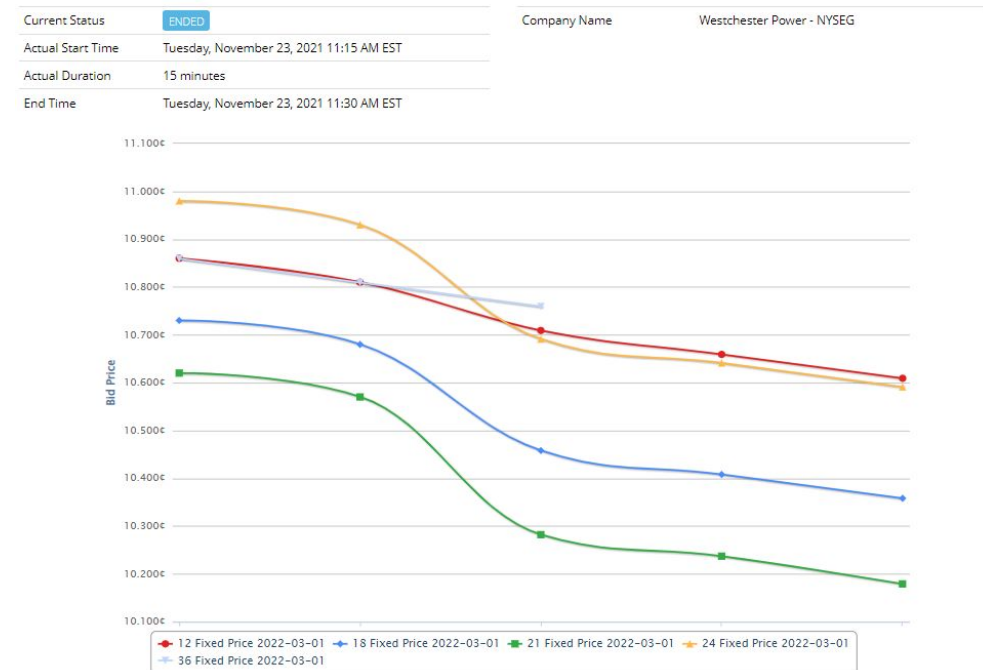
EXPANDED SUPPLIER OPTIONS

In CCA 2.0, services provided to “sleeve” wholesale energy supply makes it look just like our normal ESCO contract.



AUCTION DAY – BOTH RETAIL AND WHOLESALE

- We will run traditional full retail ESCO auctions and auction for wholesale energy block on the same day.
- We will then be able to add the known sleeving service cost to the wholesale block and compare to the retail ESCO offers and select the best.

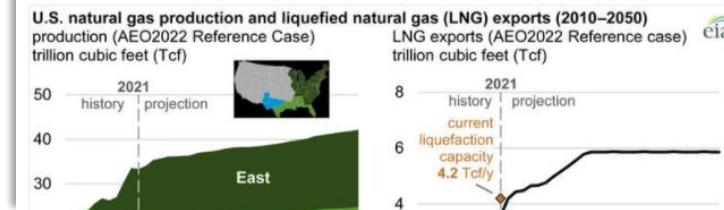


RECOMMENDATION: CONTRACT EXTENSION

- Additional time to organize enhanced auction
 - Modified RFP, Sleeving arrangement
- Seeking to move beyond current high risk & uncertainty premiums
- Up to six months (5 looks best now)
 - Market price will be significantly higher than current contract

World markets see rising uncertainty amid conflict

By Keefe Borden | 18 March 2022
6 min read



Advertisement

ASME TURBO EXPO
Turbomachinery Technical
Conference & Exposition

June 13 – 17, 2022
Rotterdam, The Netherlands

[LEARN MORE](#)

TIMELINE / NEXT STEPS

Contract Extension (looking for 5 months)

- **3/30 11AM Chief Electeds/Admins mtg to confirm MOU target price**
- **Early/Mid April: Participation MOU authorized by boards and signed**
- **Mid April:** Contract signing (immediately after all MOU's executed)
- **Mid April thru Mid May:** Prep, Opt-out mailing
- **Mid June:** end of opt-out period
- **July 1:** Participants in new extension as of their meter read date

New Contract Auction via Enhanced Format

- **Mid-August:** Participation MOUs signed off
- **Late August:** Auction
- **Early September:** Contract signing (immediately after auction award)
- **Mid September thru Mid October:** Prep, Opt-out mailing
- **Mid November:** end of opt-out period
- **December 1:** Participants in new extension as of their meter read date

[illegible]

Sustainable Westchester General
info@sustainablewestchester.org

Westchester Power
westchesterpower@sustainablewestchester.org

Westchester Power

Call us at 914-242-4725