

## 1 ENSURE MAINTENANCE OF NEW CROTON DAM CONSERVATION FLOW

- Advocate with the New York City Department of Environmental Protection to ensure adequate flow from the dam to protect Croton's drinking water.



## 2 UNDERTAKE MANAGEMENT AND CAPITAL IMPROVEMENT PLAN FOR VILLAGE PARKS, TRAILS AND OPEN SPACES

- Plan for maintenance and targeted improvements to Village facilities, e.g. bathrooms at Croton Landing, improving pedestrian link between the Yacht Club and Senasqua Park, improving Croton Gorge trail.
- Signage/wayfinding along riverfront areas to identify public areas and parking at public access points



## 3 RELOCATE VILLAGE DPW FACILITY

- Determine an alternative site for the DPW facility that is outside the FEMA floodplain.



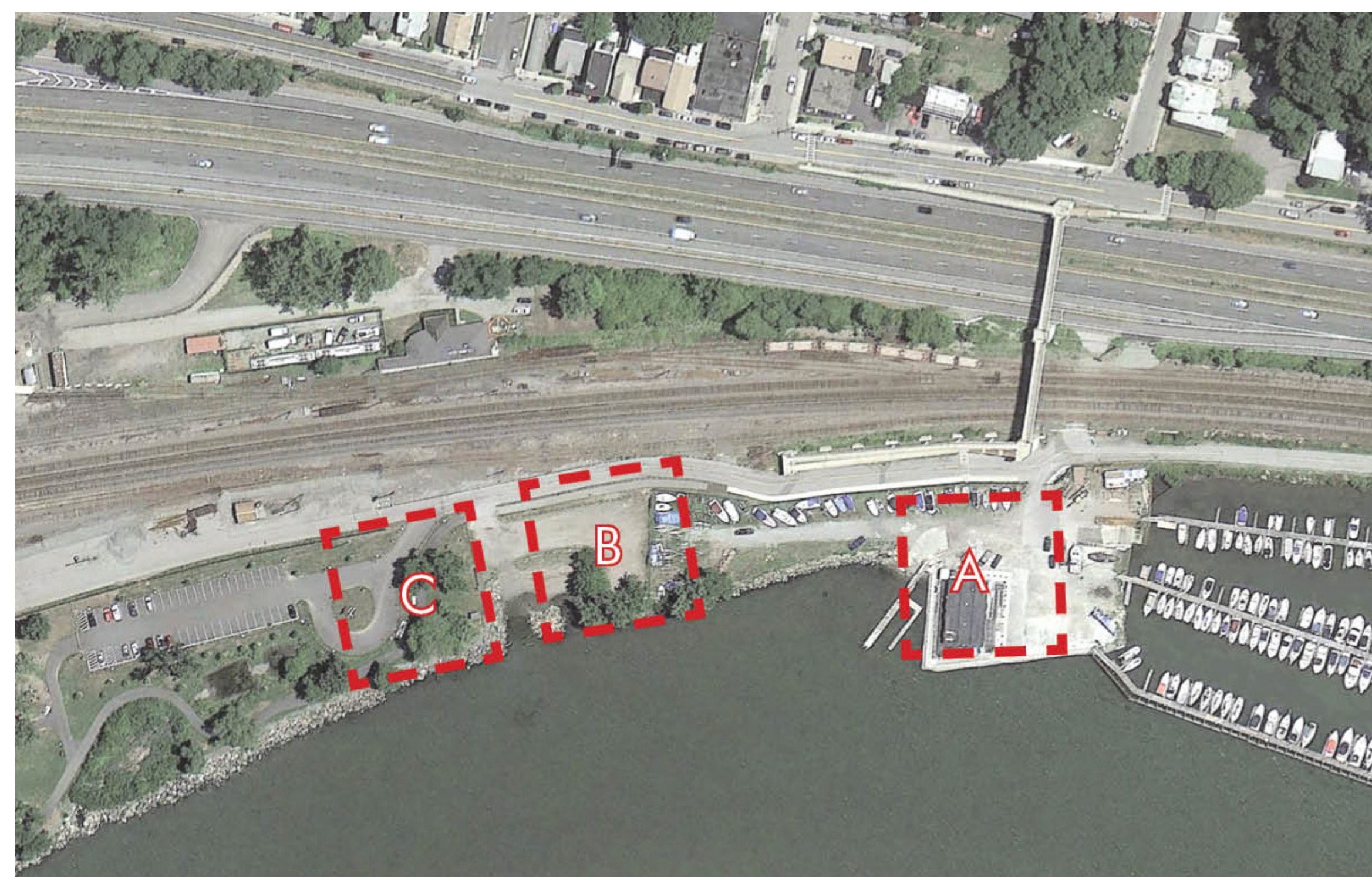
## 4 IMPROVE RIPRAP ALONG HUDSON RIVER, ESPECIALLY ALONG SENASQUA PARK

- Portions of Hudson River waterfront need better shoreline stabilization.



## 5 FACILITATE CROTON YACHT CLUB IMPROVEMENTS

- Village has looked at alternatives to enhance Yacht Club site in combination with potential improvements to Croton Landing Park.
- Potential for a restaurant at northern end of Village-owned property.



## 6 DEVELOP PLAN FOR FUTURE USE OF GOUVEIA PARK

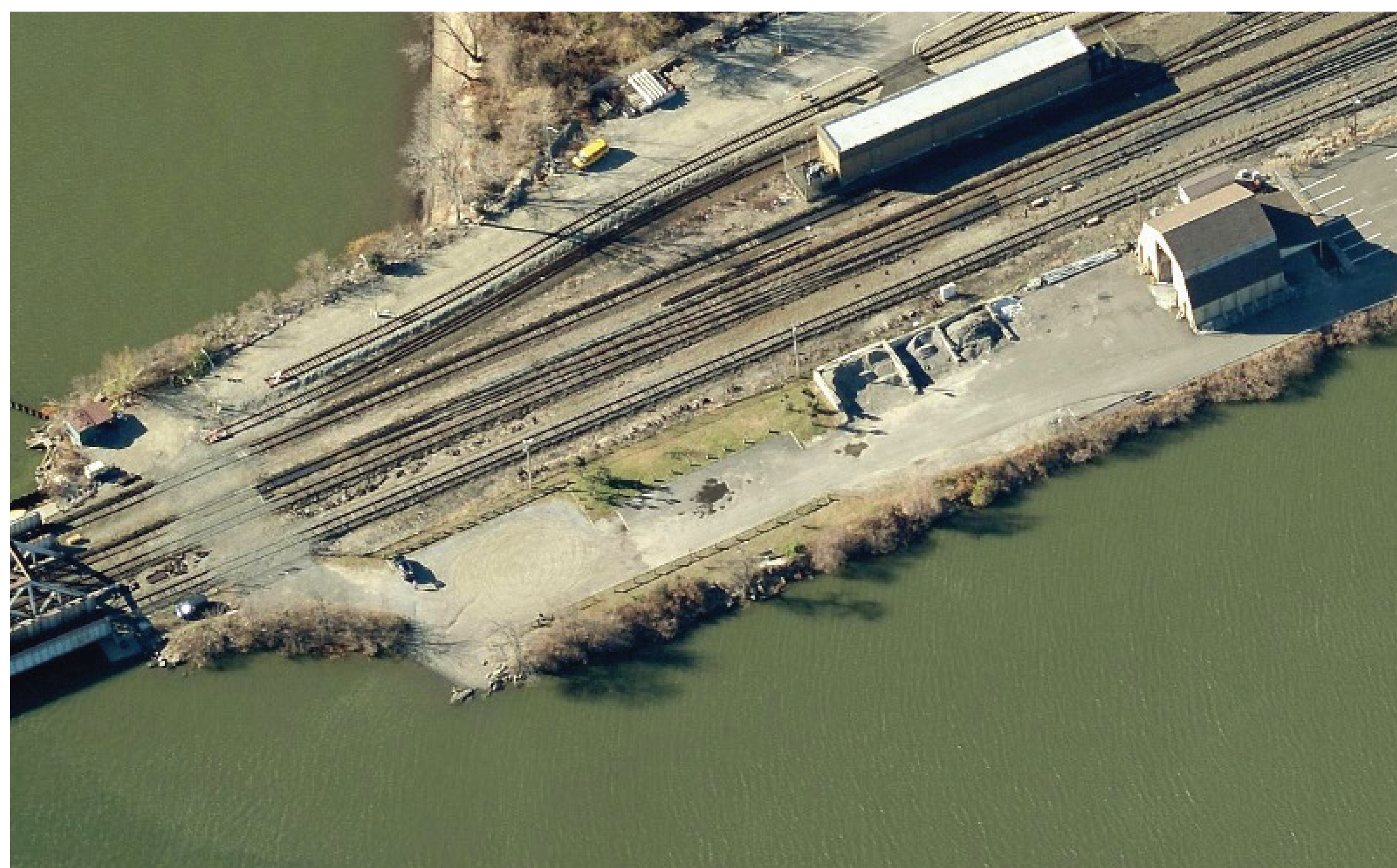
- Village was gifted Gouveia property and \$1 million endowment for public use.
- 15.6-acre property includes house and several outbuildings.





## 7 FUTURE EXPANSION OF ECHO CANOE LAUNCH

- Long-term plan for future expansion and improvements for Echo Canoe Launch, particularly if Village DPW facility is relocated.



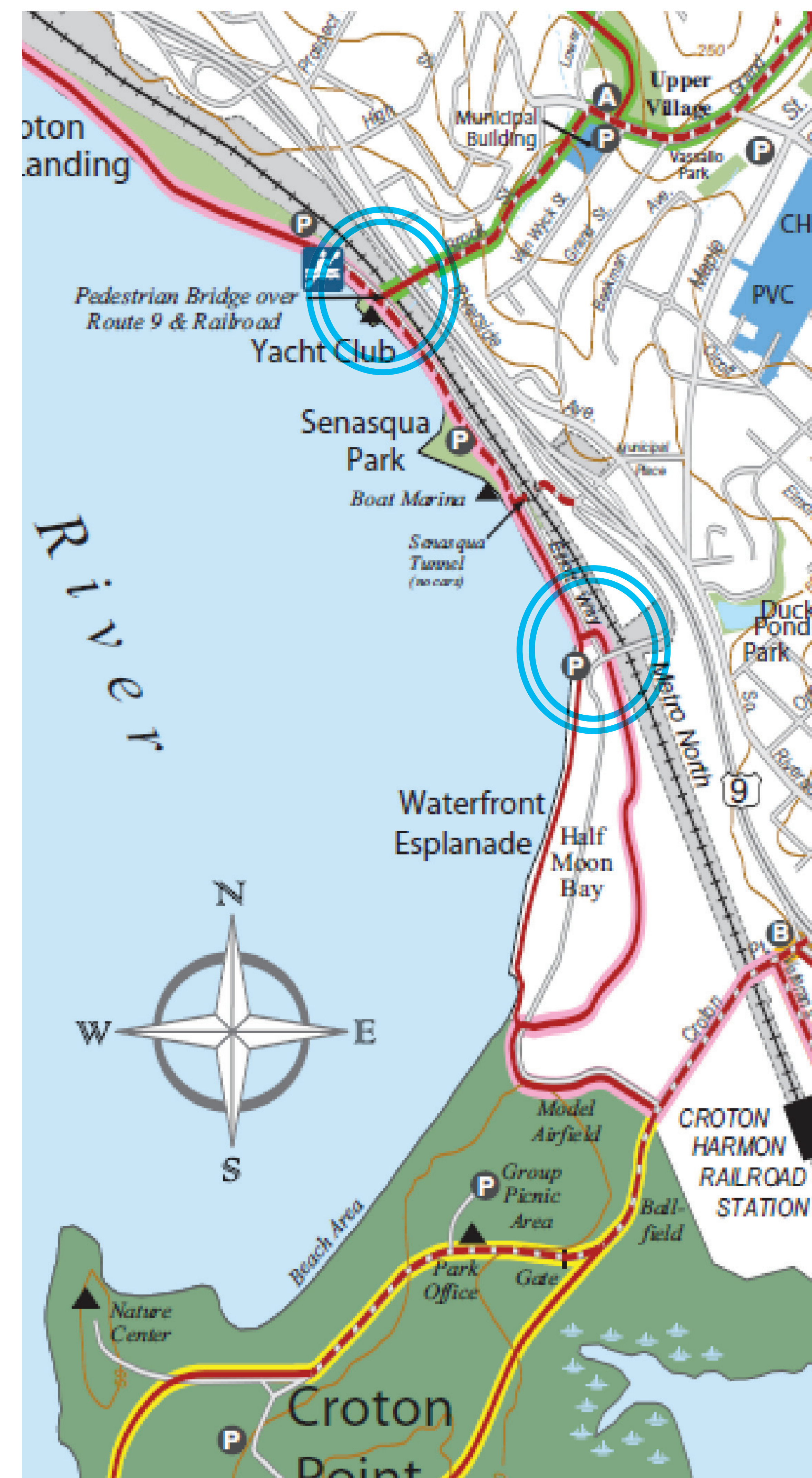
## 8 COORDINATE WITH CSX ON POTENTIAL AREAS FOR EXPANDED CROTON LANDING PARKING

- Facilitate connection to Village sewer system to free CSX's septic field area (currently in easement) for park use.
- Explore expanding parking in area along Elliott Way.



## 9 FACILITATE IMPROVED ACCESS TO WATERFRONT IN RIVERSIDE AVE/MUNICIPAL PLACE/BROOK STREET AREAS

- Pursue opportunities to enhance public access to Hudson River waterfront across Route 9A/Metro-North tracks.



## 10 ADDRESS AREAS WHERE EXISTING DRAINAGE SYSTEMS CONTRIBUTE TO EROSION ON STEEP SLOPES

- Some public trails/open spaces are subject to significant erosion, e.g., Mayo's Landing, behind Tompkins Elementary School.



## 11 FACILITATE UPGRADES TO CATCH BASINS AND OUTFALLS TO ADDRESS FLOATABLES IN CROTON BAY

- Floating debris from stormwater outfalls detracts from the bay's water quality and aesthetic beauty.

